



Especificaciones Técnicas de tejido:  
Polyscreen 410/3

Screen

REVISIÓN

1

FECHA

30/3/2020

REALIZADO POR

PABLO MOYA

**Ancho del tejido**

**3000 mm**

Wide fabric

Tissu large

**Descripción material**

**25% Poliéster - 75% PVC**

Fabric description

25% Polyester - 75% PVC

Description du tissu

25% Polyester - 75% PVC

**Peso Total (g/m2)**

**410 g/m2**

Total weight (g/m2)

Poids total (g/m2)

**Espesor (mm)**

**0,5 mm ±0'5%**

Thicknes (mm)

Epaisseur (mm)

**Factor de apertura**

**3%**

Openness factor

Degré d'ouverture

**Resistencia al fuego**

**Class B1 (DIN 4102)**

Fire retardant

**M1 (NF P 92-507)**

Résistance au feu

**Soldable por calor**

**Si**

Heat weldable

Yes

Soudable à la chaleur

Oui

**Reversible**

**No**

Réversible

No

**Mantenimiento**

**Limpieza con paño húmedo**

Maintenance

Wipe clean with a damp cloth

Entretien

Nettoyer avec un chiffon humide

**Interior/Exterior**

Indoor/Out door

Intérieure/Extérieure



**GRUPO**



Especificaciones Técnicas de tejido:  
Polyscreen 410/3

Screen

REVISIÓN

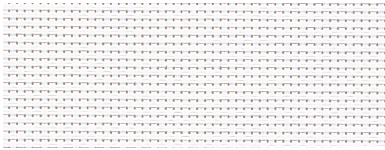
1

FECHA

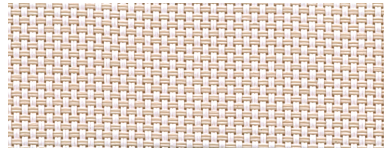
30/3/2020

REALIZADO POR

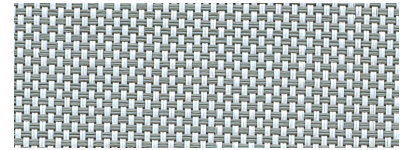
PABLO MOYA



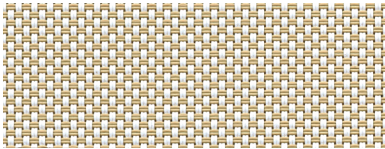
F 001



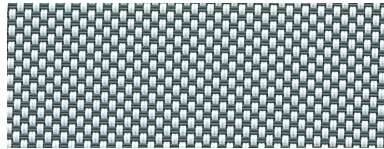
F 002



F 003



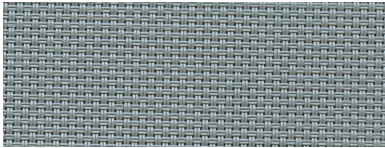
F 008



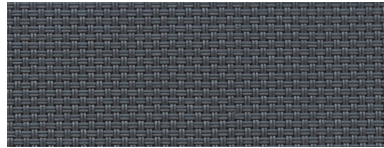
F 009



F 201



F 301



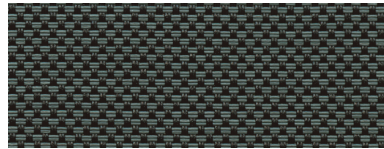
F 401



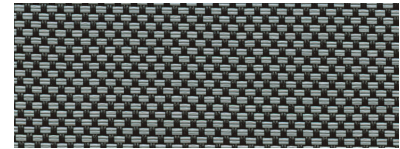
F 901



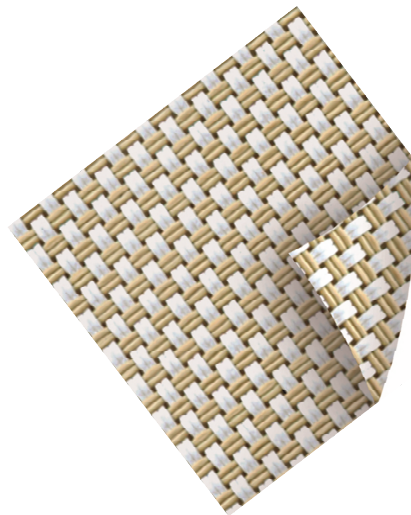
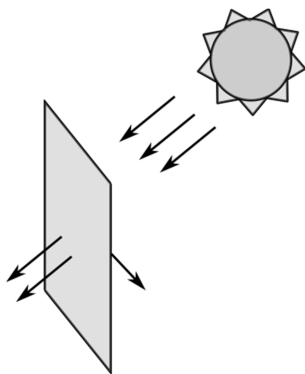
F 902



F 903



F 904



**CARA** = **DORSO**  
**FACE** = **BACK**  
**DEVANT** = **DERRIÈRE**